



BRICKHILL
HOMES

RADSTONE FIELDS
BRACKLEY, NORTHAMPTONSHIRE





CONTEMPORARY LIVING AND MARKET TOWN LIFESTYLE

Radstone Fields is an exclusive collection of 26 exceptional, luxury one and two bedroom apartments in the historic market town of Brackley, located in West Northamptonshire. This modern, thriving town is located between Oxford and Northampton and benefits from being served by major road networks, as well as rail links at nearby Banbury, offering convenient and direct travel to London.

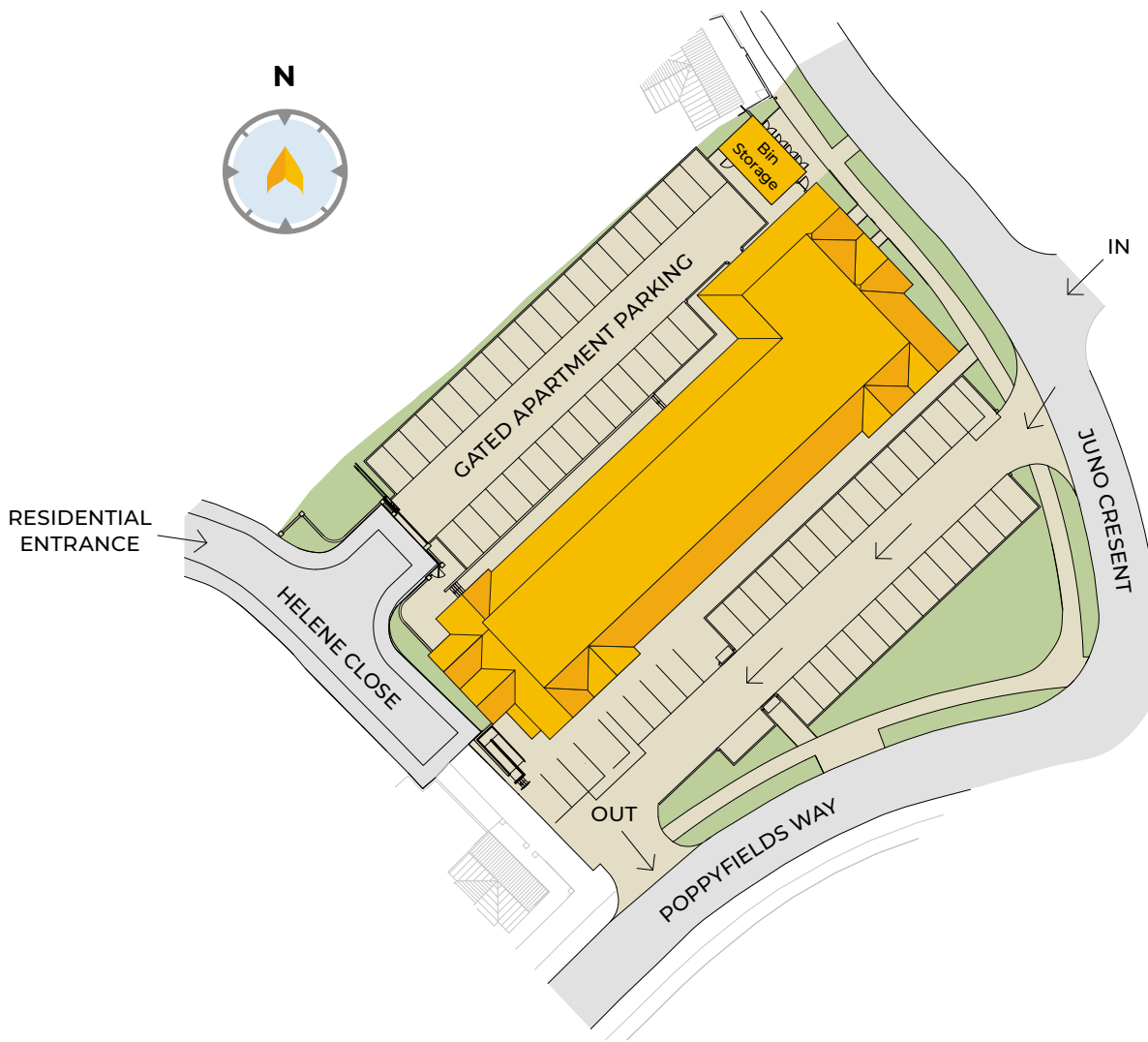
Radstone Fields offers an exclusive opportunity for contemporary apartment living in a rural, market town location. Each of the outstanding apartments have been carefully constructed to provide the very best of modern living, with specifications and finishes built to an exceptional standard, whilst offering distinctive architectural design.

This newly built mixed-use complex is situated in its own plot with secure parking available as well as space for shared amenities. The apartments are perfectly positioned, with this rapidly expanding market town providing all local amenities right on your doorstep. Supermarkets,

independent shops, cafés, pubs, hotels, restaurants, bank, chemist, infants, primary and secondary schools, church, dentist's and doctor's practices, are all within walking distance. The location also offers plenty of sporting activities with football, rugby, squash and cricket clubs and there are plenty of outdoors activities to be found with beautiful parks, nature walks and impressive lakeside scenery, all just a short walk away.



An exclusive opportunity for contemporary apartment living in a rural, market town location. ”



SITE PLAN

APARTMENT 1

2 bedroom apartment
76.4m² / 822.4ft²

APARTMENT 2

2 bedroom apartment
76.6m² / 824.5ft²

APARTMENT 3

2 bedroom apartment
71.4m² / 768.5ft²

APARTMENT 4

2 bedroom apartment
69m² / 742.7ft²

APARTMENT 5

2 bedroom apartment
69m² / 742.7ft²

APARTMENT 6

2 bedroom apartment
69.7m² / 750.3ft²

APARTMENT 7

2 bedroom apartment
74.8m² / 805.1ft²

APARTMENT 8

2 bedroom apartment
64.5m² / 694.3ft²

APARTMENT 9

1 bedroom apartment
49.8m² / 536ft²

APARTMENT 10

1 bedroom apartment
49.8m² / 536ft²

APARTMENT 11

2 bedroom apartment
64.7m² / 696.4ft²

APARTMENT 12

1 bedroom apartment
58.1m² / 625.4ft²

APARTMENT 14

1 bedroom apartment
51.4m² / 553.3ft²

APARTMENT 15

2 bedroom apartment
76.4m² / 822.4ft²

APARTMENT 16

2 bedroom apartment
76.6m² / 824.5ft²

APARTMENT 17

2 bedroom apartment
71.4m² / 768.5ft²

APARTMENT 18

2 bedroom apartment
69m² / 742.7ft²

APARTMENT 19

2 bedroom apartment
69m² / 742.7ft²

APARTMENT 20

2 bedroom apartment
69.7m² / 750.3ft²

APARTMENT 21

2 bedroom apartment
74.8m² / 805.1ft²

APARTMENT 22

2 bedroom apartment
64.5m² / 694.3ft²

APARTMENT 23

1 bedroom apartment
49.8m² / 536ft²

APARTMENT 24

1 bedroom apartment
49.8m² / 536ft²

APARTMENT 25

2 bedroom apartment
64.7m² / 696.4ft²

APARTMENT 26

1 bedroom apartment
58.1m² / 625.4ft²

APARTMENT 27

1 bedroom apartment
51.4m² / 553.3ft²



WHY BUY WITH US

Finding the perfect house to call your home requires a lot of careful consideration; you want the perfect location, great access to local amenities, great spaces and a home that is as unique as you are.

At Brickhill Homes, we build stunning houses and apartments in small communities that you can fall in love with. Homes that have been carefully thought out to deliver great character whilst delivering the very best specifications and modern living spaces. Every one of our developments is unique and as such, each of our homes reflect this.

We can do this because Brickhill Homes is a small private developer that isn't interested in becoming the best-known name in the housing industry or building vast developments. We'd rather be recognised for our attention to quality, style and the very best building standards.

We design homes that fit within their local environments, taking care to pay attention to local history, features of the local towns and the character of the communities that we build in.

“
Stunning, unique homes, in perfect locations, built just for you. ”

APARTMENT 1 & 15

2 bedroom apartment

A luxury 2 bedroom apartment situated on the right-hand side of the complex, with views to the side of the property. This stunning home comprises 2 double bedrooms, with the large master bedroom featuring an en suite, a family bathroom and a large, spacious open plan kitchen/living/dining room area.

KEY FEATURES

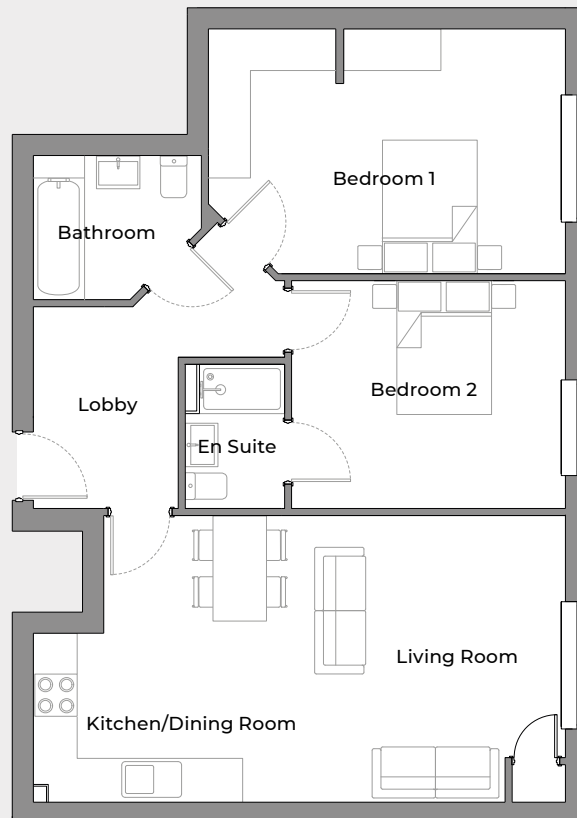
- Contemporary, stylish property
- High quality specification
- Spacious open plan kitchen/living/dining room
- Family bathroom
- 2 double bedrooms
- En suite master bedroom
- Secure parking available

FIRST FLOOR / SECOND FLOOR

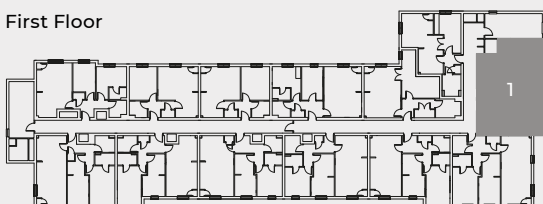
Kitchen/Dining Room	2953	x	4050
	9'7"	x	13'3"
Living Room	4563	x	4050
	15'0"	x	13'3"
Bedroom 1	5029	x	3455
	16'5"	x	11'3"
Bedroom 2	3869	x	3237
	12'7"	x	10'6"
En Suite	1410	x	1998
	4'6"	x	6'5"
Bathroom	2388	x	2037
	7'8"	x	6'7"

Bedroom dimensions (shown in mm and feet & inches) exclude en suite, corridors & wardrobes

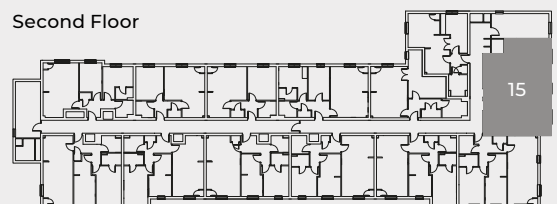
Images are for illustration purposes only and floorplans are accurate at the time of print, therefore variations in finishes and exact layout may be subject to change. Please request complete specifications from Brickhill Homes. Please be aware that a tolerance of 50mm should be taken into consideration for dimensions due to plasterboard and brickwork. Measurements provided are maximum measurement information for the space.



First Floor



Second Floor



APARTMENT 2 & 16

2 bedroom apartment

A luxury 2 bedroom apartment situated on the right-hand side of the complex, with views to the front and side of the property. This stunning home comprises 2 large double bedrooms, with the master bedroom featuring an en suite, a family bathroom and a large, spacious open plan kitchen/living/dining room area, with dual aspect windows.

KEY FEATURES

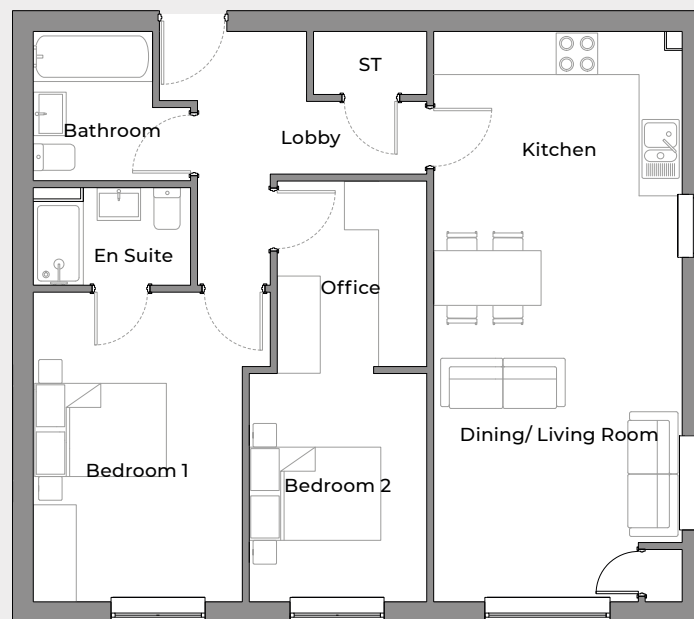
- Contemporary, stylish property
- High quality specification
- Spacious open plan kitchen/living/dining room
- Family bathroom
- 2 double bedrooms
- En suite master bedroom
- Secure parking available

FIRST FLOOR / SECOND FLOOR

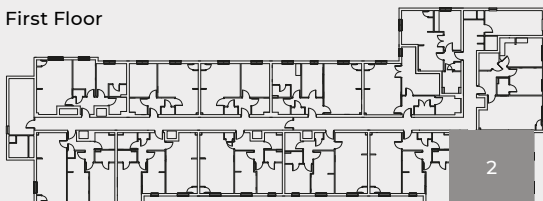
Dining/Living Room	3567	x	5843
	11'7"	x	19'2"
Kitchen	3567	x	2352
	11'7"	x	7'7"
Bedroom 1	2997	x	4452
	9'8"	x	14'6"
En Suite	2249	x	1410
	7'4"	x	4'6"
Office	2159	x	2681
	7'1"	x	8'8"
Bedroom 2	2563	x	3277
	8'4"	x	10'8"
Bathroom	2249	x	2133
	7'4"	x	7'0"

Bedroom dimensions (shown in mm and feet & inches) exclude en suite, corridors & wardrobes

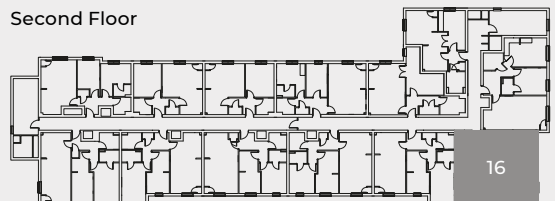
Images are for illustration purposes only and floorplans are accurate at the time of print, therefore variations in finishes and exact layout may be subject to change. Please request complete specifications from Brickhill Homes. Please be aware that a tolerance of 50mm should be taken into consideration for dimensions due to plasterboard and brickwork. Measurements provided are maximum measurement information for the space.



First Floor



Second Floor



APARTMENT 3 & 17

2 bedroom apartment

A luxury 2 bedroom apartment situated on the right-hand side of the complex, with views to the front of the property. This stunning home comprises 2 large double bedrooms, with the master bedroom featuring an en suite, a family bathroom and a large, spacious open plan kitchen/living/dining room area.

KEY FEATURES

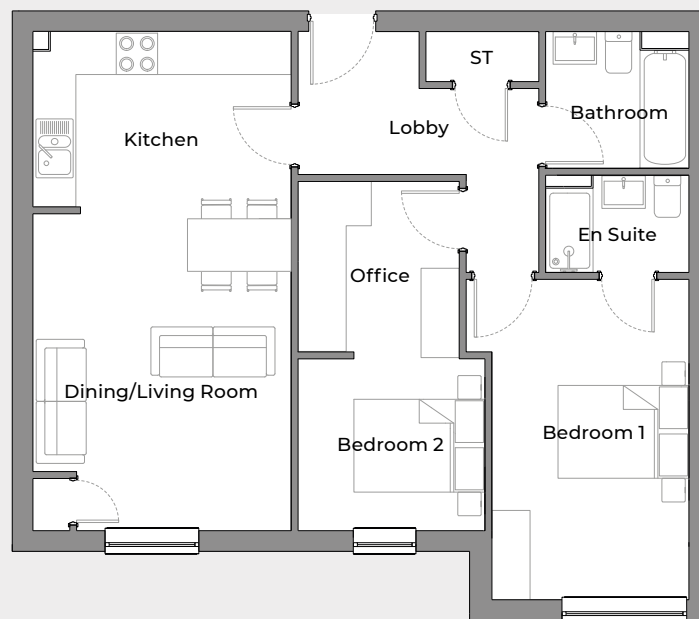
- Contemporary, stylish property
- High quality specification
- Spacious open plan kitchen/living/dining room
- Family bathroom
- 2 double bedrooms
- En suite master bedroom
- Secure parking available

FIRST FLOOR / SECOND FLOOR

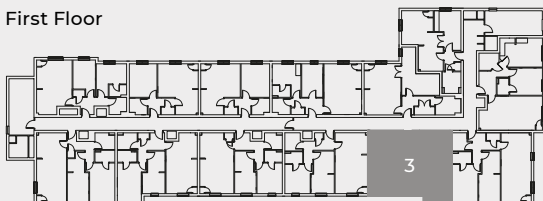
Dining/Living Room	3722	x	4573
	12'2"	x	15'0"
Kitchen	3722	x	2520
	12'2"	x	8'3"
Bedroom 1	3207	x	4625
	10'5"	x	15'2"
En Suite	2055	x	1410
	6'7"	x	4'6"
Bedroom 2	2710	x	2471
	8'9"	x	8'1"
Office	2338	x	2472
	7'7"	x	8'1"
Bathroom	2055	x	1960
	6'7"	x	6'4"

Bedroom dimensions (shown in mm and feet & inches) exclude en suite, corridors & wardrobes

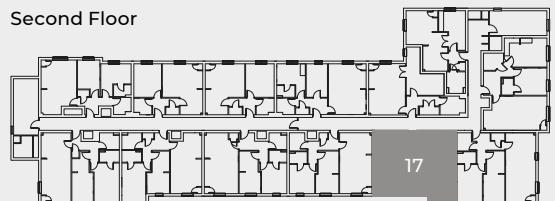
Images are for illustration purposes only and floorplans are accurate at the time of print, therefore variations in finishes and exact layout may be subject to change. Please request complete specifications from Brickhill Homes. Please be aware that a tolerance of 50mm should be taken into consideration for dimensions due to plasterboard and brickwork. Measurements provided are maximum measurement information for the space.



First Floor



Second Floor



APARTMENT 4 & 18

2 bedroom apartment

A luxury 2 bedroom apartment situated on the right-hand side of the complex, with views to the front of the property. This stunning home comprises 2 large double bedrooms, with the master bedroom featuring an en suite, a family bathroom and a large, spacious open plan kitchen/living/dining room area.

KEY FEATURES

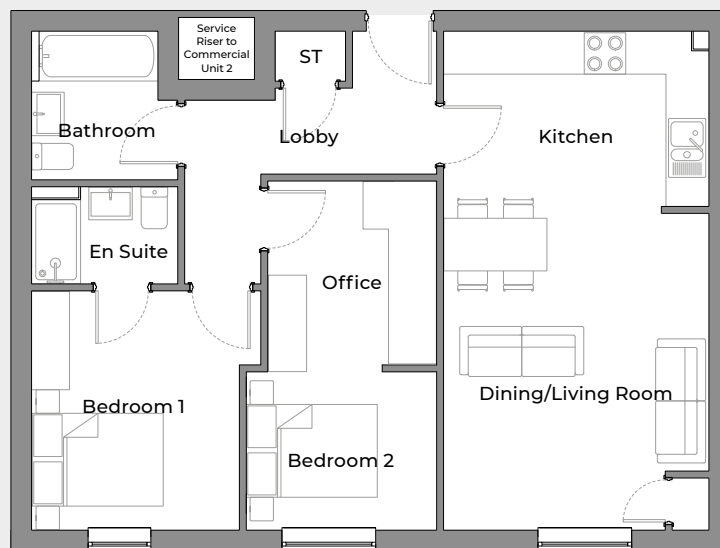
- Contemporary, stylish property
- High quality specification
- Spacious open plan kitchen/living/dining room
- Family bathroom
- 2 double bedrooms
- En suite master bedroom
- Secure parking available

FIRST FLOOR / SECOND FLOOR

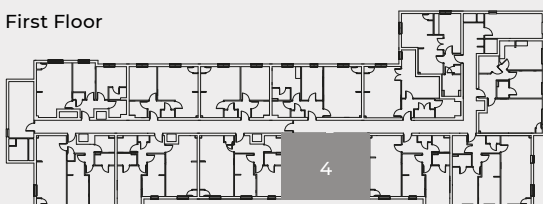
Dining/Living Room	3872	x	4573
	12'7"	x	15'0"
Kitchen	3872	x	2520
	12'7"	x	8'3"
Bedroom 1	3302	x	3449
	10'8"	x	11'3"
En Suite	2098	x	1410
	6'9"	x	4'6"
Bedroom 2	2761	x	2262
	9'0"	x	7'4"
Office	2463	x	2681
	8'1"	x	8'8"
Bathroom	2098	x	2133
	6'9"	x	7'0"

Bedroom dimensions (shown in mm and feet & inches) exclude en suite, corridors & wardrobes

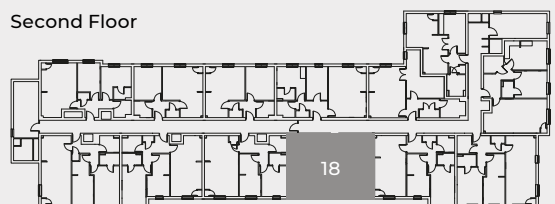
Images are for illustration purposes only and floorplans are accurate at the time of print, therefore variations in finishes and exact layout may be subject to change. Please request complete specifications from Brickhill Homes. Please be aware that a tolerance of 50mm should be taken into consideration for dimensions due to plasterboard and brickwork. Measurements provided are maximum measurement information for the space.



First Floor



Second Floor



APARTMENT 5 & 19

2 bedroom apartment

A luxury 2 bedroom apartment situated on the left-hand side of the complex, with views to the front of the property. This stunning home comprises 2 large double bedrooms, with the master bedroom featuring an en suite, a family bathroom and a large, spacious open plan kitchen/living/dining room area.

KEY FEATURES

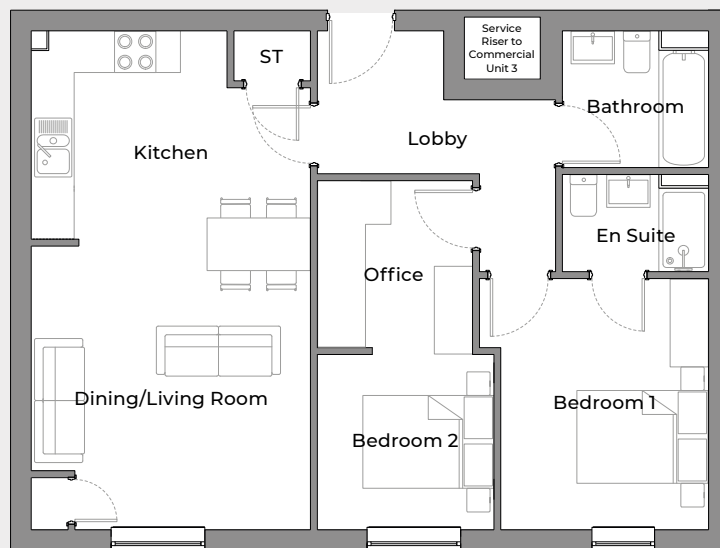
- Contemporary, stylish property
- High quality specification
- Spacious open plan kitchen/living/dining room
- Family bathroom
- 2 double bedrooms
- En suite master bedroom
- Secure parking available

FIRST FLOOR / SECOND FLOOR

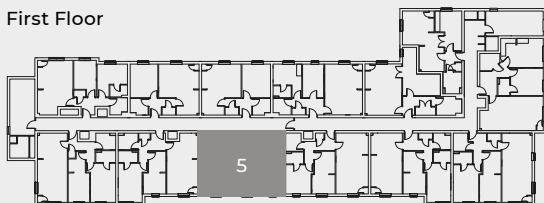
Dining/Living Room	4027	x	4093
	13'2"	x	13'4"
Kitchen	4027	x	3000
	13'2"	x	9'8"
Bedroom 1	2992	x	3622
	9'8"	x	11'9"
En Suite	2098	x	1410
	6'9"	x	4'6"
Bedroom 2	2561	x	2521
	9'0"	x	7'4"
Office	2250	x	2422
	7'4"	x	7'9"
Bathroom	2098	x	1960
	6'9"	x	6'4"

Bedroom dimensions (shown in mm and feet & inches) exclude en suite, corridors & wardrobes

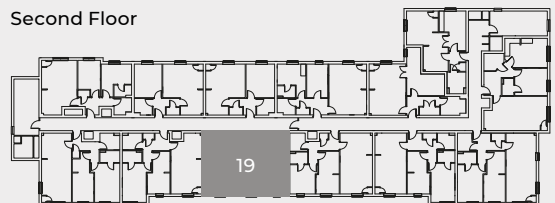
Images are for illustration purposes only and floorplans are accurate at the time of print, therefore variations in finishes and exact layout may be subject to change. Please request complete specifications from Brickhill Homes. Please be aware that a tolerance of 50mm should be taken into consideration for dimensions due to plasterboard and brickwork. Measurements provided are maximum measurement information for the space.



First Floor



Second Floor



APARTMENT 6 & 20

2 bedroom apartment

A luxury 2 bedroom apartment situated on the left-hand side of the complex, with views to the front of the property. This stunning home comprises 2 large double bedrooms, with the master bedroom featuring an en suite, a family bathroom and a large, spacious open plan kitchen/living/dining room area.

KEY FEATURES

- Contemporary, stylish property
- High quality specification
- Spacious open plan kitchen/living/dining room
- Family bathroom
- 2 double bedrooms
- En suite master bedroom
- Secure parking available

FIRST FLOOR / SECOND FLOOR

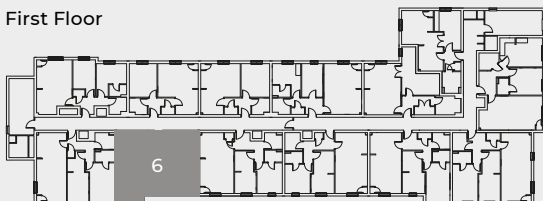
Dining/Living Room	3722	x	4093
	12'2"	x	13'4"
Kitchen	3722	x	3000
	12'2"	x	9'8"
Bedroom 1	2860	x	4625
	9'4"	x	15'2"
En Suite	2372	x	1410
	7'8"	x	4'6"
Bedroom 2	2693	x	2521
	8'8"	x	8'3"
Office	2050	x	2422
	6'7"	x	7'9"
Bathroom	2350	x	1958
	7'7"	x	6'4"

Bedroom dimensions (shown in mm and feet & inches) exclude en suite, corridors & wardrobes

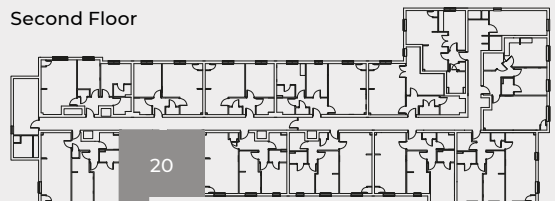
Images are for illustration purposes only and floorplans are accurate at the time of print, therefore variations in finishes and exact layout may be subject to change. Please request complete specifications from Brickhill Homes. Please be aware that a tolerance of 50mm should be taken into consideration for dimensions due to plasterboard and brickwork. Measurements provided are maximum measurement information for the space.



First Floor



Second Floor



APARTMENT 7 & 21

2 bedroom apartment

A luxury 2 bedroom apartment situated on the left-hand side of the complex, with views to the front and side of the property. This stunning home comprises 2 large double bedrooms, with the master bedroom featuring an en suite, a family bathroom and a large, spacious open plan kitchen/living/dining room area, with dual aspect windows.

KEY FEATURES

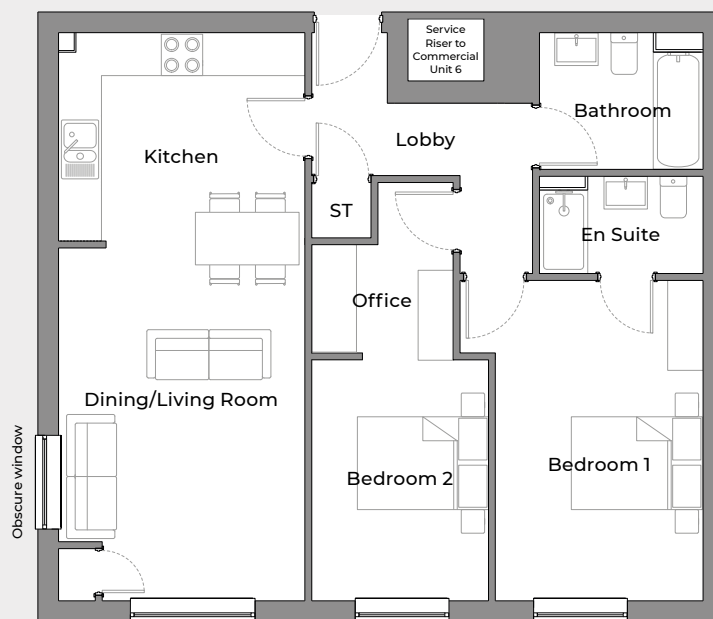
- Contemporary, stylish property
- High quality specification
- Spacious open plan kitchen/living/dining room
- Family bathroom
- 2 double bedrooms
- En suite master bedroom
- Secure parking available

FIRST FLOOR / SECOND FLOOR

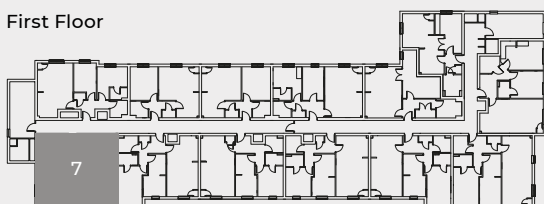
Dining/Living Room	3550	x	5095
	11'6"	x	16'7"
Kitchen	3550	x	3000
	11'6"	x	9'8"
Bedroom 1	2990	x	4625
	9'8"	x	15'2"
En Suite	2350	x	1410
	7'7"	x	4'6"
Bedroom 2	2563	x	3523
	8'4"	x	11'6"
Office	2050	x	1519
	6'7"	x	5'0"
Bathroom	2350	x	1958
	7'7"	x	6'4"

Bedroom dimensions (shown in mm and feet & inches) exclude en suite, corridors & wardrobes

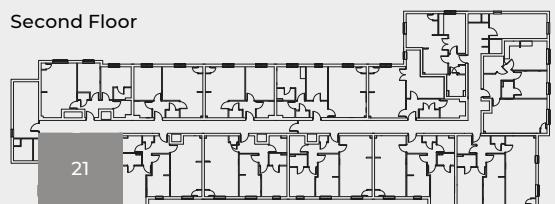
Images are for illustration purposes only and floorplans are accurate at the time of print, therefore variations in finishes and exact layout may be subject to change. Please request complete specifications from Brickhill Homes. Please be aware that a tolerance of 50mm should be taken into consideration for dimensions due to plasterboard and brickwork. Measurements provided are maximum measurement information for the space.



First Floor



Second Floor



APARTMENT 8 & 22

2 bedroom apartment

A luxury 2 bedroom apartment situated on the left-hand side of the complex, with views to the rear of the property. This stunning home comprises 2 double bedrooms, with the master bedroom featuring an en suite, a family bathroom and a large, spacious open plan kitchen/living/dining room area.

KEY FEATURES

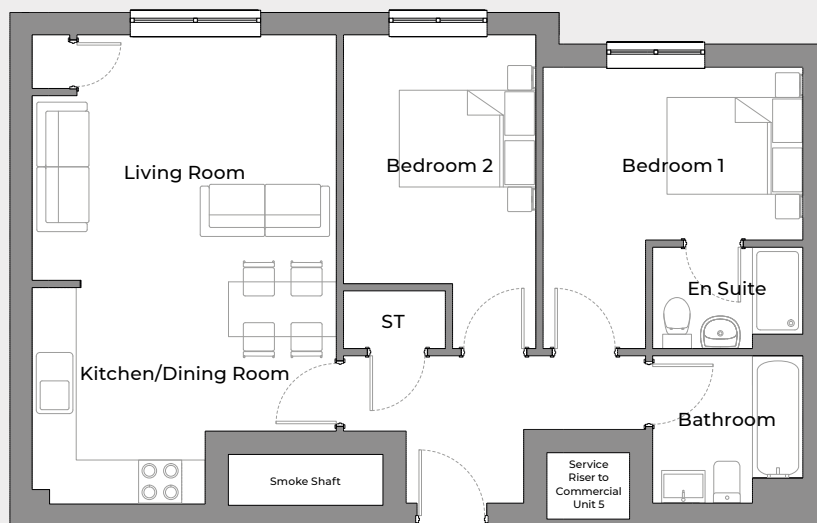
- Contemporary, stylish property
- High quality specification
- Spacious open plan kitchen/living/dining room
- Family bathroom
- 2 double bedrooms
- En suite master bedroom
- Secure parking available

FIRST FLOOR / SECOND FLOOR

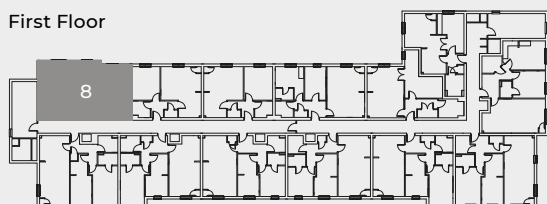
Kitchen/Dining Room	4219	x	3000
	13'8"	x	9'8"
Living Room	4219	x	3043
	13'8"	x	10'0"
Bedroom 1	3613	x	3893
	11'9"	x	12'8"
En Suite	2087	x	1410
	6'8"	x	4'6"
Bedroom 2	2676	x	3450
	8'8"	x	11'3"
Bathroom	2087	x	2050
	6'8"	x	6'7"

Bedroom dimensions (shown in mm and feet & inches) exclude en suite, corridors & wardrobes

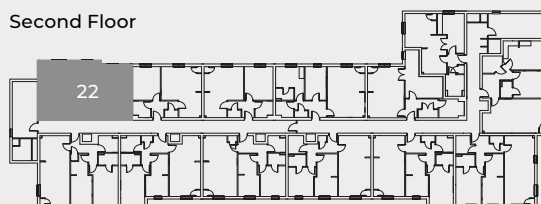
Images are for illustration purposes only and floorplans are accurate at the time of print, therefore variations in finishes and exact layout may be subject to change. Please request complete specifications from Brickhill Homes. Please be aware that a tolerance of 50mm should be taken into consideration for dimensions due to plasterboard and brickwork. Measurements provided are maximum measurement information for the space.



First Floor



Second Floor



APARTMENT 9 & 23

1 bedroom apartment

A luxury 1 bedroom apartment situated on the left-hand side of the complex, with views to the rear of the property. This stunning home comprises a large double bedroom, a separate bathroom and a spacious open plan kitchen/living/dining room area.

KEY FEATURES

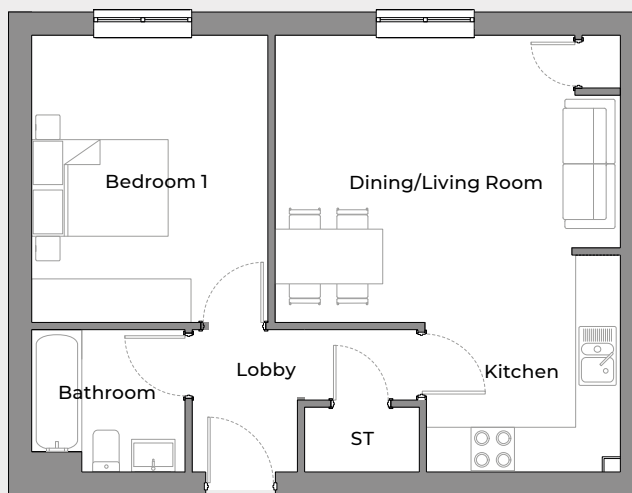
- Contemporary, stylish property
- High quality specification
- Spacious open plan kitchen/living/dining room
- Separate bathroom
- Large double bedroom
- Secure parking available

FIRST FLOOR / SECOND FLOOR

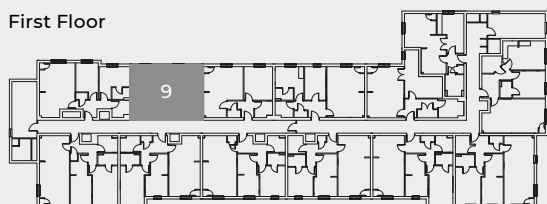
Dining/Living Room	4780	x	4002
	15'7"	x	13'1"
Kitchen	2679	x	3000
	8'8"	x	9'8"
Bedroom 1	3300	x	4002
	10'8"	x	13'1"
Bathroom	2137	x	1960
	7'0"	x	6'4"

Bedroom dimensions (shown in mm and feet & inches) exclude en suite, corridors & wardrobes

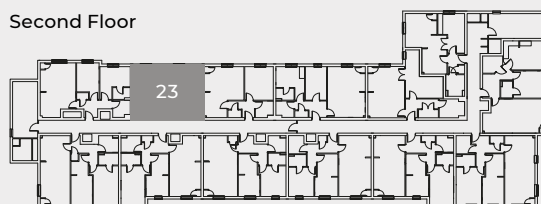
Images are for illustration purposes only and floorplans are accurate at the time of print, therefore variations in finishes and exact layout may be subject to change. Please request complete specifications from Brickhill Homes. Please be aware that a tolerance of 50mm should be taken into consideration for dimensions due to plasterboard and brickwork. Measurements provided are maximum measurement information for the space.



First Floor



Second Floor



APARTMENT 10 & 24

1 bedroom apartment

A luxury 1 bedroom apartment situated on the left-hand side of the complex, with views to the rear of the property. This stunning home comprises a large double bedroom, a separate bathroom and a spacious open plan kitchen/living/dining room area.

KEY FEATURES

- Contemporary, stylish property
- High quality specification
- Spacious open plan kitchen/living/dining room
- Separate bathroom
- Large double bedroom
- Secure parking available

FIRST FLOOR / SECOND FLOOR

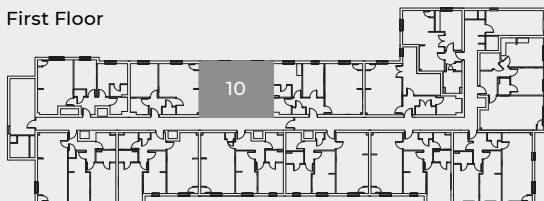
Dining/Living Room	4780	x	4002
	15'7"	x	13'1"
Kitchen	2679	x	3000
	8'8"	x	9'8"
Bedroom 1	3304	x	4002
	10'8"	x	13'1"
Bathroom	2137	x	1960
	7'0"	x	6'4"

Bedroom dimensions (shown in mm and feet & inches) exclude en suite, corridors & wardrobes

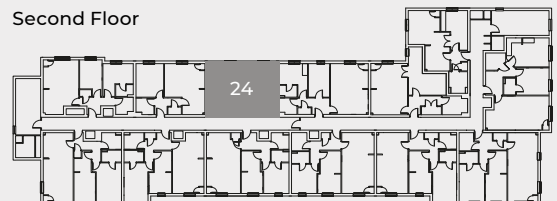
Images are for illustration purposes only and floorplans are accurate at the time of print, therefore variations in finishes and exact layout may be subject to change. Please request complete specifications from Brickhill Homes. Please be aware that a tolerance of 50mm should be taken into consideration for dimensions due to plasterboard and brickwork. Measurements provided are maximum measurement information for the space.



First Floor



Second Floor



APARTMENT 11 & 25

2 bedroom apartment

A luxury 2 bedroom apartment situated on the right-hand side of the complex, with views to the rear of the property. This stunning home comprises 2 double bedrooms, with the master bedroom featuring an en suite, a family bathroom and a large, spacious open plan kitchen/living/dining room area.

KEY FEATURES

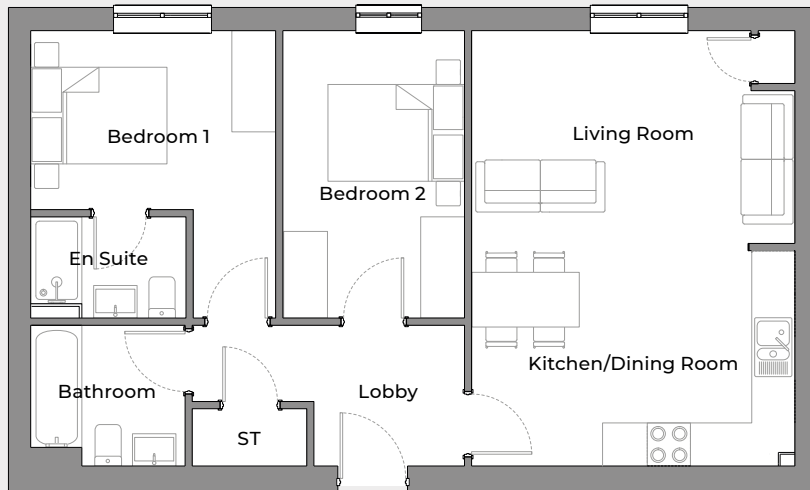
- Contemporary, stylish property
- High quality specification
- Spacious open plan kitchen/living/dining room
- Family bathroom
- 2 double bedrooms
- En suite master bedroom
- Secure parking available

FIRST FLOOR / SECOND FLOOR

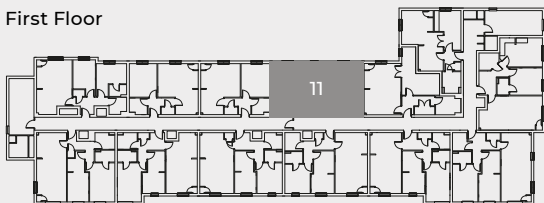
Kitchen/Dining Room	4502	x	2933
	14'8"	x	9'6"
Living Room	4502	x	2963
	14'8"	x	9'7"
Bedroom 1	3399	x	4002
	11'2"	x	13'1"
En Suite	2150	x	1410
	7'1"	x	4'6"
Bedroom 2	2529	x	4002
	8'3"	x	13'1"
Bathroom	2137	x	1960
	7'0"	x	6'4"

Bedroom dimensions (shown in mm and feet & inches) exclude en suite, corridors & wardrobes

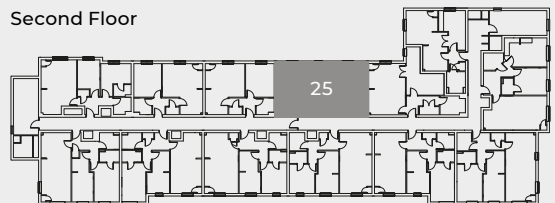
Images are for illustration purposes only and floorplans are accurate at the time of print, therefore variations in finishes and exact layout may be subject to change. Please request complete specifications from Brickhill Homes. Please be aware that a tolerance of 50mm should be taken into consideration for dimensions due to plasterboard and brickwork. Measurements provided are maximum measurement information for the space.



First Floor



Second Floor



APARTMENT 12 & 26

1 bedroom apartment

A luxury 1 bedroom apartment situated on the right-hand side of the complex, with views to the rear of the property. This stunning home comprises a large double bedroom, a separate bathroom and a spacious open plan kitchen/living/dining room area.

KEY FEATURES

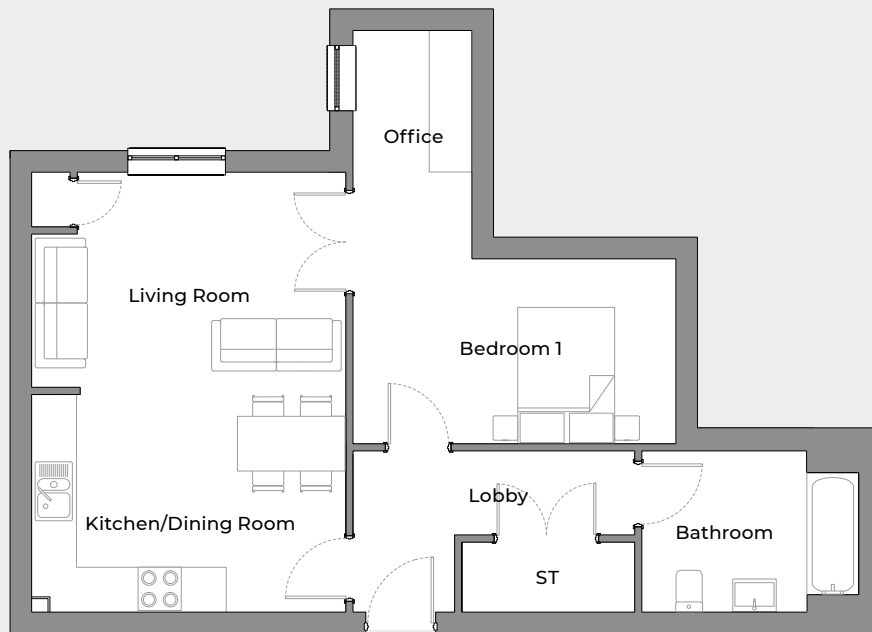
- Contemporary, stylish property
- High quality specification
- Spacious open plan kitchen/living/dining room
- Separate bathroom
- Large double bedroom
- Secure parking available

FIRST FLOOR / SECOND FLOOR

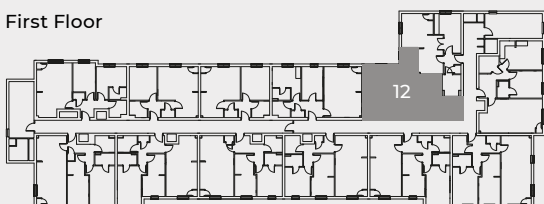
Kitchen/Dining Room	4340	x	3000
	14'2"	x	9'8"
Living Room	4340	x	2963
	14'2"	x	9'7"
Bedroom 1	4461	x	2546
	14'6"	x	8'4"
Office	1629	x	3171
	5'3"	x	10'4"
Bathroom	2988	x	2213
	9'8"	x	7'2"

Bedroom dimensions (shown in mm and feet & inches) exclude en suite, corridors & wardrobes

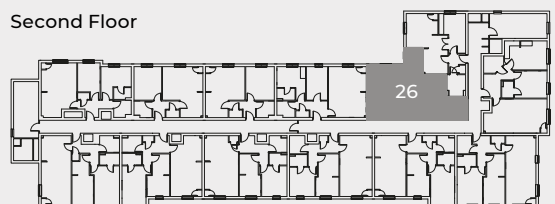
Images are for illustration purposes only and floorplans are accurate at the time of print, therefore variations in finishes and exact layout may be subject to change. Please request complete specifications from Brickhill Homes. Please be aware that a tolerance of 50mm should be taken into consideration for dimensions due to plasterboard and brickwork. Measurements provided are maximum measurement information for the space.



First Floor



Second Floor



APARTMENT 14 & 27

1 bedroom apartment

A luxury 1 bedroom apartment situated on the right-hand side of the complex, with views to the rear of the property. This stunning home comprises a large double bedroom, a separate bathroom and a spacious open plan kitchen/living room area.

KEY FEATURES

- Contemporary, stylish property
- High quality specification
- Open plan kitchen/living room
- Separate bathroom
- Double bedroom
- Secure parking available

FIRST FLOOR / SECOND FLOOR

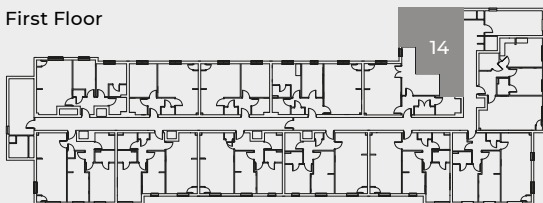
Dining/Living Room	4921	x	3986
	16'1"	x	13'1"
Kitchen	2948	x	3000
	9'7"	x	9'8"
Office	1978	x	2239
	6'5"	x	7'3"
Bedroom 1	3165	x	2458
	10'3"	x	8'1"
Bathroom	2193	x	2546
	7'2"	x	8'4"

Bedroom dimensions (shown in mm and feet & inches) exclude en suite, corridors & wardrobes

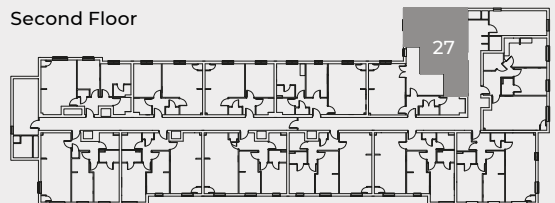
Images are for illustration purposes only and floorplans are accurate at the time of print, therefore variations in finishes and exact layout may be subject to change. Please request complete specifications from Brickhill Homes. Please be aware that a tolerance of 50mm should be taken into consideration for dimensions due to plasterboard and brickwork. Measurements provided are maximum measurement information for the space.

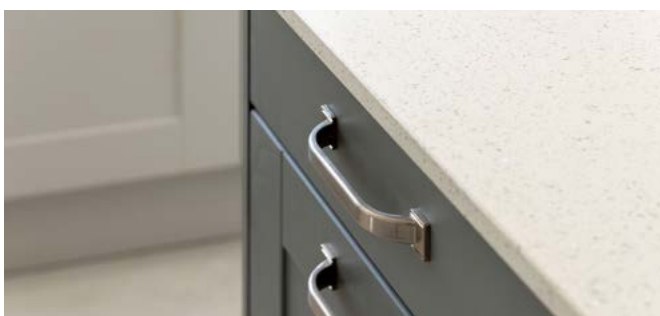


First Floor



Second Floor







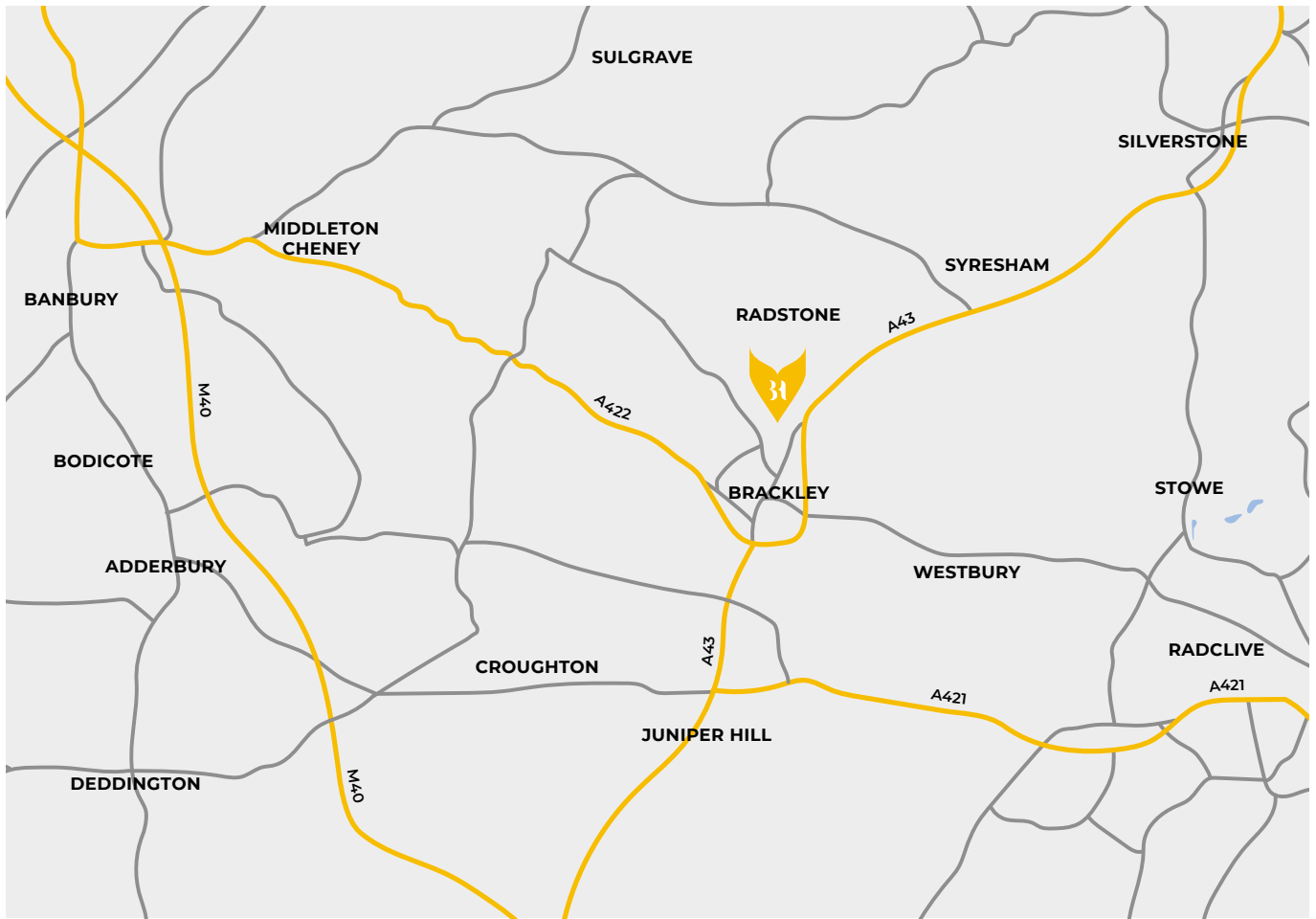
QUALITY FROM START TO FINISH

When we build our homes, one thing is at the heart of everything we do. A true belief that brilliant craftsmanship delivers the best quality finish that we can achieve. It can be seen throughout the entire process that starts with the planning of the development, through the architectural design process and right through to the final build and specification of our homes.

This means that we select the best materials and make sure that the final specification of the interior matches the quality of the home.

When you walk into one of our homes, you'll not only find great architectural features but a specification that is of the highest standard, from floor to ceiling, with open modern living spaces.

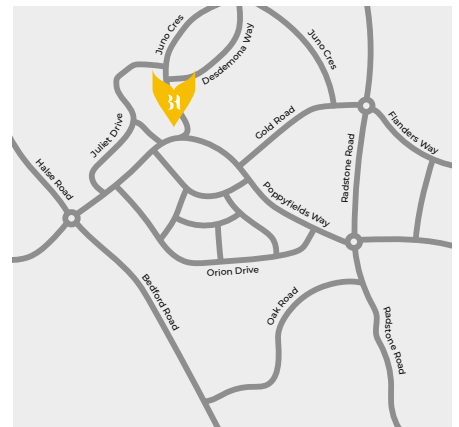
Please contact Brickhill Homes to discover more about our specifications and the options available to you.



1 - 27, 3 Helene Close, Brackley, Northamptonshire, NN13 6GF

DIRECTIONS

- 1 From M1 take the A422 (Junction 11) or A43 (Junction 10) towards Brackley.
- 2 Continue along A43 (Brackley bypass) until reaching BP Services roundabout.
- 3 Take the first exit past Paisley Pear Inn onto Northampton Road.
- 4 At the next roundabout take the third exit, onto Poppyfields Way.
- 5 Continue on Poppyfields Way straight ahead at next roundabout (second exit).
- 6 Pass Gold Road on the right and Radstone Fields is located just after the next left turn (Juno Crescent), opposite Egerton Hall.



BRICKHILL HOMES

For residential enquires
 James Kendall Estate Agents
 T: +44 (0) 1234 852434
 E: hello@jameskendall.co.uk
 www.jameskendall.co.uk

For commercial enquires
 Bray Fox Smith
 T: +44 (0) 1908 061260
 E: claudiopalmiero@brayfoxsmith.com
 E: ianleather@brayfoxsmith.com
 www.brayfoxsmith.com