



BRICKHILL  
HOMES

GARRICKS COURT  
MARSTON MORETAINE, BEDFORDSHIRE



# SITE PLAN

## APARTMENT 1

2 bedroom apartment  
68m<sup>2</sup> / 732ft<sup>2</sup>

## APARTMENT 2

2 bedroom apartment  
66.4m<sup>2</sup> / 715ft<sup>2</sup>

## APARTMENT 3

2 bedroom apartment  
70.4m<sup>2</sup> / 758ft<sup>2</sup>

## APARTMENT 4

2 bedroom apartment  
76.8m<sup>2</sup> / 827ft<sup>2</sup>

## APARTMENT 5

2 bedroom apartment  
68m<sup>2</sup> / 732ft<sup>2</sup>

## APARTMENT 6

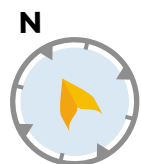
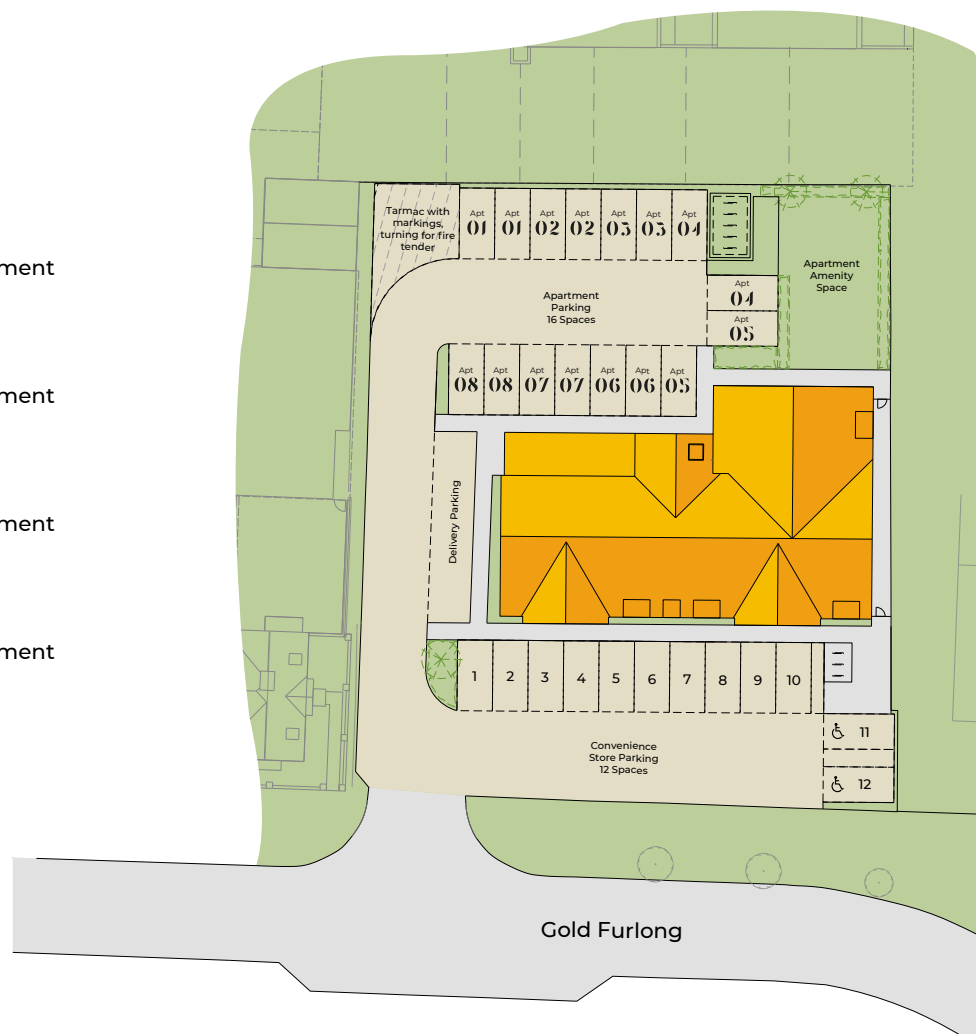
2 bedroom apartment  
66.4m<sup>2</sup> / 715ft<sup>2</sup>

## APARTMENT 7

2 bedroom apartment  
70.4m<sup>2</sup> / 758ft<sup>2</sup>

## APARTMENT 8

2 bedroom apartment  
76.8m<sup>2</sup> / 827ft<sup>2</sup>





## APARTMENT 4

### 2 bedroom apartment

A luxury first floor, 2 bedroom apartment situated on the right-hand side of the complex, with views to the rear and side of the property. This stunning home comprises 2 double bedrooms; the master bedroom features an en suite, the second bedroom boasts French doors to a Juliet balcony, a family bathroom and a spacious open plan kitchen/living room area which boasts a dual aspect.

### KEY FEATURES

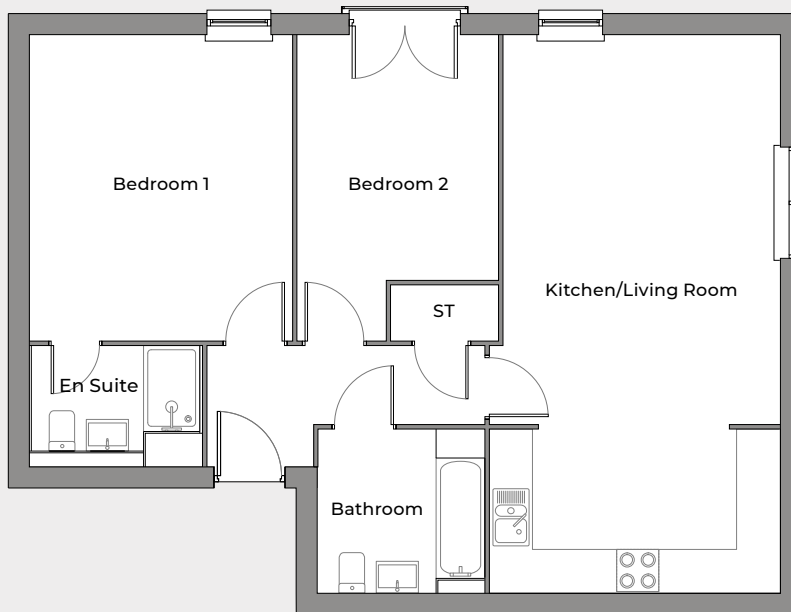
- Contemporary, stylish property
- High quality specification
- Spacious kitchen/living room
- Family bathroom
- 2 double bedrooms
- En suite master bedroom
- Second bedroom with a Juliet balcony
- 2 dedicated private parking spaces

### FIRST FLOOR

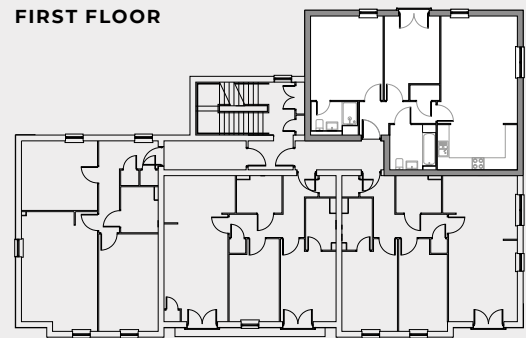
Kitchen/Living Room	3912	x	7904
	12'10"	x	25'11"
Bedroom 1	3712	x	4327
	12'2"	x	14'2"
En Suite	2397	x	1489
	7'10"	x	4'11"
Bedroom 2	2845	x	3464
	9'4"	x	11'4"
Bathroom	2352	x	2300
	7'9"	x	7'7"

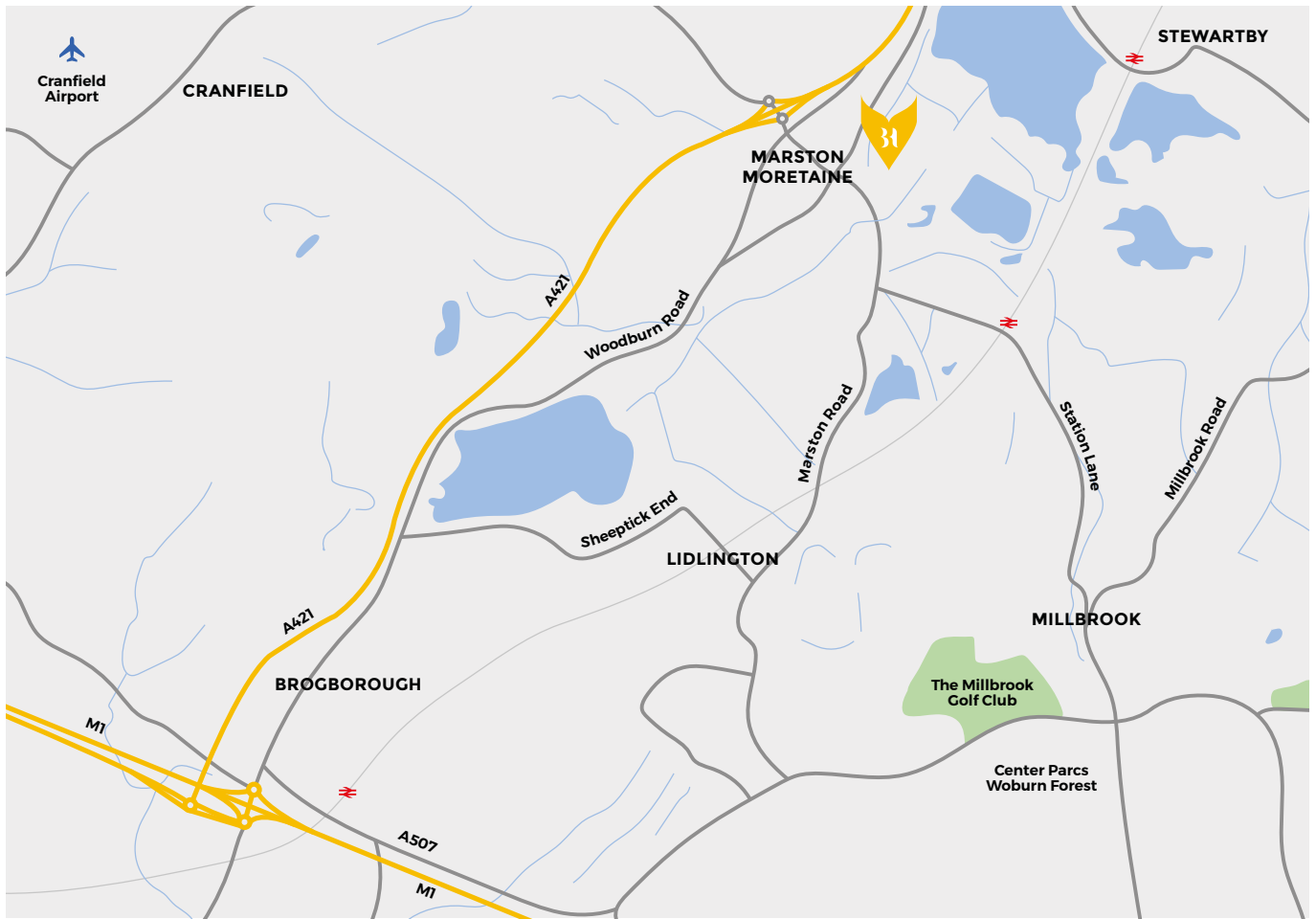
Bedroom dimensions (shown in mm and feet & inches) exclude en suite, corridors & wardrobes

Images are for illustration purposes only and floorplans are accurate at the time of print, therefore variations in finishes and exact layout may be subject to change. Please request complete specifications from Brickhill Homes. Please be aware that a tolerance of 50mm should be taken into consideration for dimensions due to plasterboard and brickwork. Measurements provided are maximum measurement information for the space.



### FIRST FLOOR

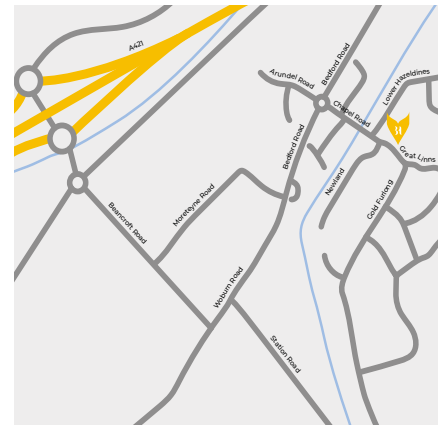




**Notice:** Using the postcode MK43 0XR on Google Maps currently, will not direct you to the correct location.

### DIRECTIONS

- 1 Take the A421 from M1, Junction 13.
- 2 Take exit from A421, signposted Cranfield/Marston Moretaine/Services.
- 3 At the roundabout head right, approaching the village using Beancroft Road.
- 4 Turn left onto Bedford Road, signposted Lidlington/Millbrook/Amphill.
- 5 At the first roundabout, take the third exit onto Chapel Road and continue into Gold Furlong.
- 6 Garricks Court is situated on the left-hand side, just past the turning to Lower Hazeldines.



  
**BRICKHILL  
 HOMES**

Garricks Court, Gold Furlong, Marston Moretaine, Bedfordshire, MK43 0XR

T: 01908 766127  
 E: info@brickhill-homes.co.uk  
 W: brickhill-homes.co.uk

  
**warranty  
 LABC**