







BRICKHILL  
HOMES

OLD DROVERS VIEW  
SWANBOURNE - BUCKINGHAMSHIRE





## SITE PLAN

-  **1 OLD DROVERS VIEW**  
5 bedroom detached home  
2106 sq. ft
-  **2 OLD DROVERS VIEW**  
5 bedroom detached home  
2339 sq. ft
-  **3 OLD DROVERS VIEW**  
5 bedroom detached home  
2100 sq. ft
-  **4 OLD DROVERS VIEW**  
5 bedroom detached home  
2350 sq. ft





# 03 OLD DROVERS VIEW

## Plot 3 - 3 bedroom detached home

A spacious 5 bedroom detached family home with an open plan kitchen/dining and a family room with bi-fold doors. There is also a large drawing room. The master bedroom and bedroom 2 both have an en suite. There are a further 3 bedrooms. There is also a double garage and, gardens and a paddock.

### KEY FEATURES

- Spacious dining kitchen with family room
- Large drawing room
- Spacious study
- Two en suite bedrooms
- Generous hall and stairs
- Attached double garage
- 10 Year LABC Warranty

### GROUND FLOOR

Hall	3000 x 4000	9'8" x 13'1"
Family/Kitchen/Dining	6900 x 5500	22'6" x 18'0"
Drawing Room	4400 x 7100	14'4" x 23'3"
Study	3700 x 2100	12'1" x 6'9"
Cloaks	1200 x 1700	3'9" x 5'6"
Utility	2400 x 1700	7'9" x 5'6"
Garage	5100 x 5000	16'7" x 16'4"

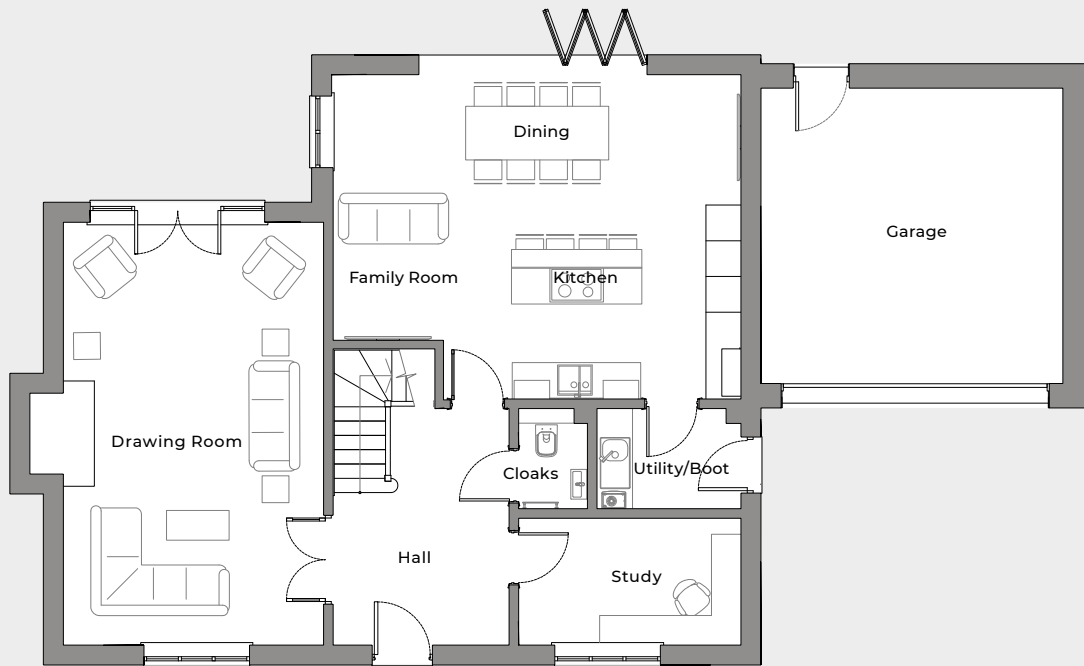
### FIRST FLOOR

Bedroom 1	4800 x 3200	15'7" x 10'5"
Walk-in closet	2000 x 1400	6'6" x 4'6"
En Suite	2000 x 1800	6'6" x 5'9"
Bedroom 2	4900 x 2900	16'11" x 9'5"
En Suite	2500 x 1800	8'2" x 5'9"
Bedroom 3	3300 x 3800	10'8" x 12'5"
Bedroom 4	3300 x 3200	10'8" x 10'5"
Bedroom 5	3100 x 2700	10'2" x 8'9"
Bathroom	2000 x 3300	6'6" x 10'8"
Landing	4200 x 3500	13'8" x 11'5"

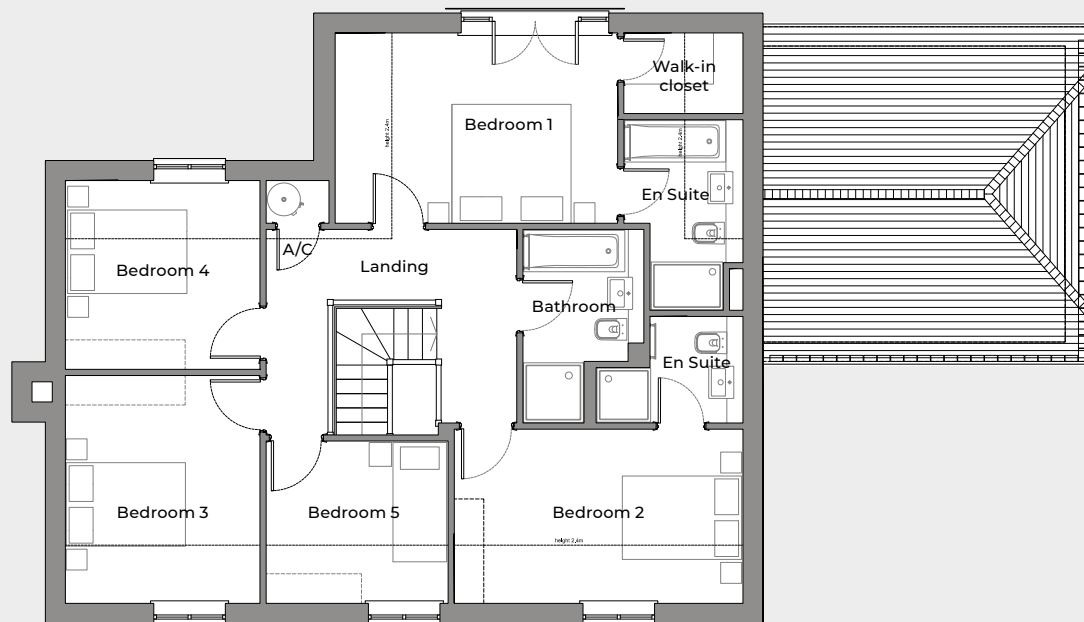
Bedroom dimensions exclude en suite, corridors & wardrobes

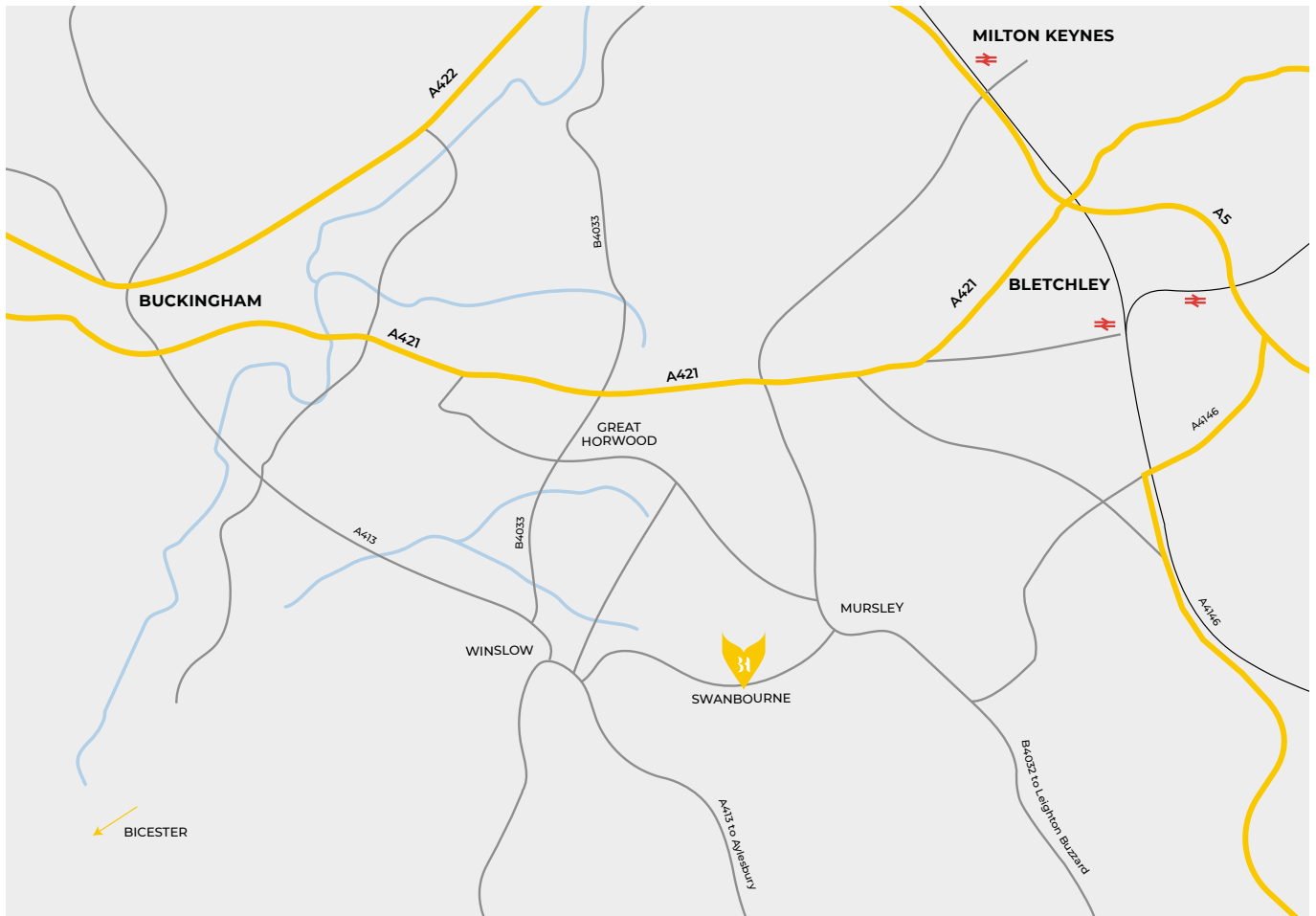
Images are for illustration purposes only and floorplans are accurate at the time of print, therefore variations in finishes and exact layout may be subject to change. Please request complete specifications from the agent. Please be aware that a tolerance of 50mm should be taken into consideration for dimensions due to plasterboard and brickwork. Measurements provided are maximum measurement information for the space.

GROUND FLOOR



FIRST FLOOR





### DIRECTIONS

1

Please use the postcode MK17 0SL in your sat nav.

2

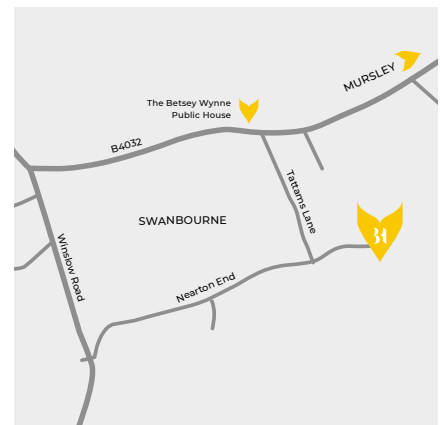
Swanbourne can be found on the B4032 between Winslow and Mursley.

3

Once in Swanbourne please take the turning for Tattams Lane which is the road opposite The Betsey Wynne pub and follow this road to the t-junction at the end of the road.

4

At the t-junction turn left and follow the lane to the end of the road where Old Drovers View is located.



Old Drovers View,  
Nearton End, Swanbourne,  
Buckinghamshire. MK17 0SL

E: [info@brickhill-homes.co.uk](mailto:info@brickhill-homes.co.uk)  
W: [brickhill-homes.co.uk](http://brickhill-homes.co.uk)



Get in touch with our agents  
Call: 01296 712717

